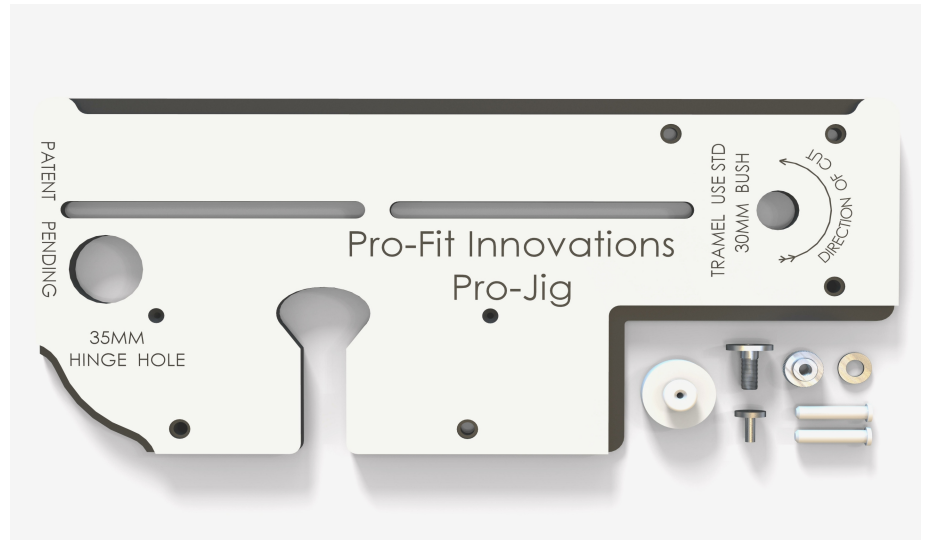


## Pro-Fit Pro-Jig

### The multi-purpose installation jig

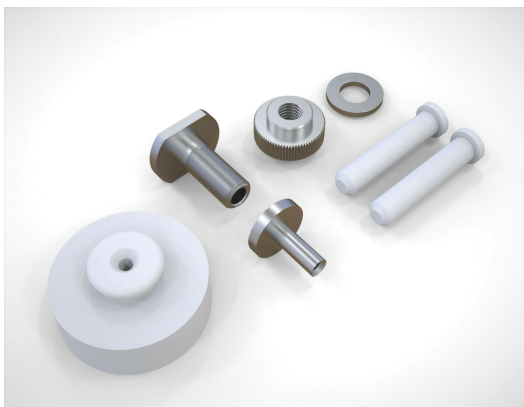
#### Specification

- Ultra compact design.
- Quick jig calibration.
- Easy set up.
- Simple to use.
- Unique Zero bung.
- Built in trammel system for easy adjustment.
- Single worktop pocket hole jig. Great for working on small material.
- less bulky than a full size jig.
- Two countersunk holes to help lock the jig without clamps.
- Precision Components.
- Strong trespa material.
- Gives excellent installation support.
- British manufactured.



#### Quick uses

- Forming internal and external curves and circles
- Notching end panels for continuous plinth lines.
- Easy hinge hole positioning
- Quick setup 45 and 90 degree cuts
- Quick setup trim edge great for wrap-arounds
- sharp point remover for continuous edging
- Plinth cuts
- Round sink cut-outs including rebating for sink clips
- Can also be used to create bespoke larger templates.
- Unique Zero bung for setting up the hinge and tap positions



## Pro-Jig™