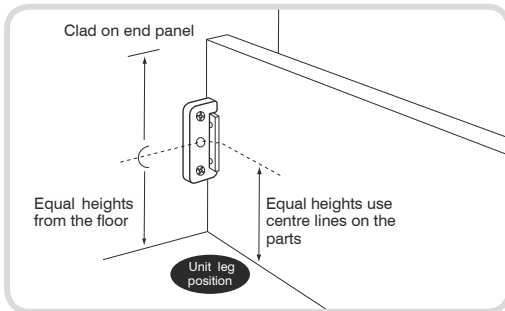
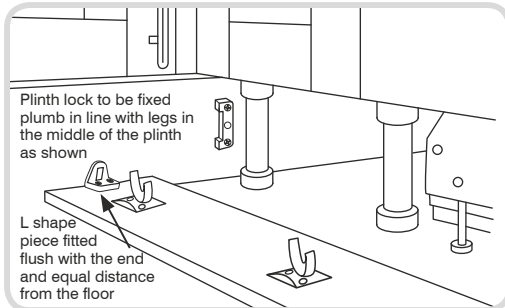


PlinthLock®

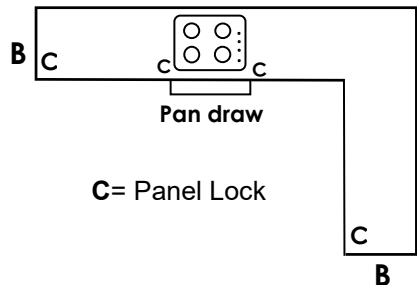
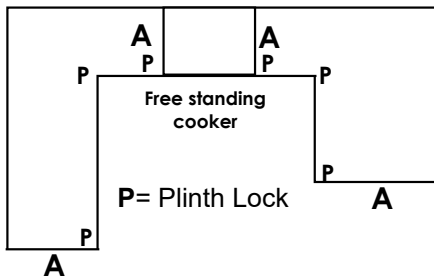
Instructions



Fitting Kitchen Plinths

1. Scribe plinth and cut to correct height.
2. Measure height of plinth and mark height on inside of end panel.
3. Find centre of this height and fit Large Part of Plinth lock in place using the centre line marked on the Plinth lock as a guide. Make sure the Plinth lock is not fitted in front of the leg alignment.
4. Now look at the height of the plinth and mark the centre. Fix the Small Part of the Plinth lock in place using the centre line marked on the Plinth lock as a guide.
5. Slot into position.

Where to install



A = Full height end panels B = Return plinths and pan draws

Patented

PanelLock®

The Multi Use Patented Connection System

Panel Lock is a quick and easy multi use concealed fixing system that can be used on a wide range of applications.

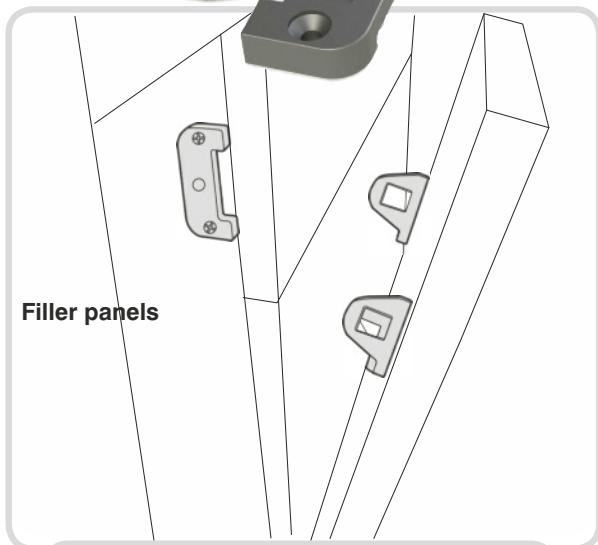
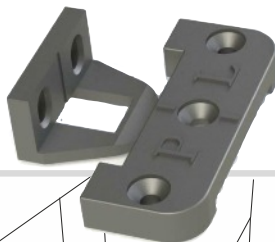
It can be either removable or permanently fixed with the optional locking pin.

Now incorporating a NEW feature of a ratchet system Panel Lock can be incrementally adjusted after fitting for more accuracy.

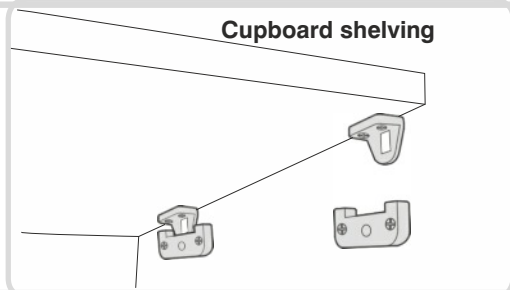
Manufactured in glass filled nylon this fixing connection system is extremely resilient and can withstand heavy loads.

There are literally hundreds of uses with Panel Lock

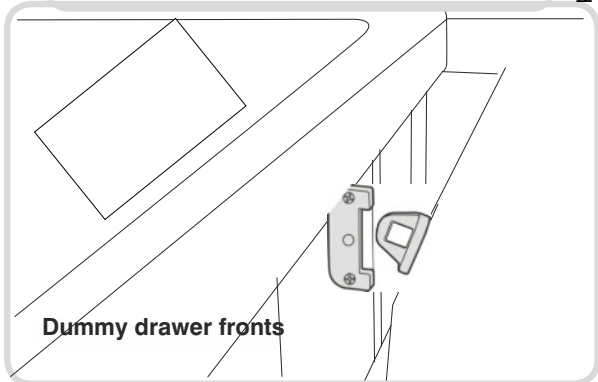
- Dummy drawers frontals
- Corner Posts
- Access Panels
- Shelves
- Pipe boxing
- Filler and back panels
- Corner posts
- Return Plinths
- Bridging details
- Bath Panels
- Fitted Bedroom Furniture
- Panels For under oven housings
- Tall oven housing
- Bridging Panels for fridge freezers
- Access Panels
- All materials for bath panels
- Wardrobe Shelving
- Many More applications



Filler panels



Cupboard shelving



Dummy drawer fronts

© Pro-fit Innovations Patented