

Pro-fit PanelLock

The Multi Use Concealed Connection System

Panel Lock is a quick and easy multi use concealed fixing system that can be used on a wide range of applications. It can be either removable or permanently fixed with the optional locking pin.

Panel Lock allows for adjustments to be made after the panel as been fitted.

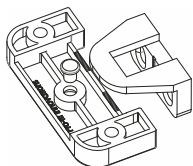
Now incorporating a NEW feature of a ratchet system Panel Lock can be incrementally adjusted after fitting for more accuracy.

Quick Setup Guide

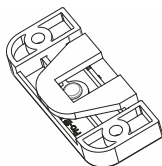
- Mark the position of the female bracket where required.
- Check screws are suitable for the material thickness.
- Pilot hole and fix in position the female bracket with the screws provided.
- Use the datum centre line on the L shape male bracket to align the bracket position to the panel.
- Now align the male and female brackets and push into position.

Panel Lock Locking Options

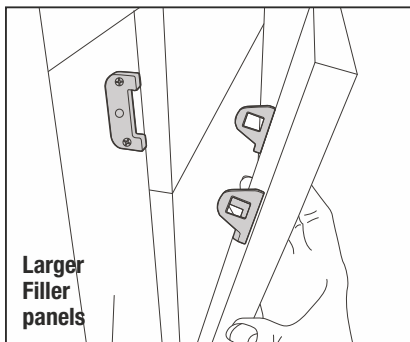
- Friction fit is when you want to create a removeable panel or return plinth detail.
- Mechanical is when you want the secure the panel lock with the option of a centre screw.
- Locking pin is when you cannot get to the fixing but still need it to lock.
"Tip" Test joint before inserting the pin.
- The Panel Lock system has been designed to be fitter friendly and has many uses.



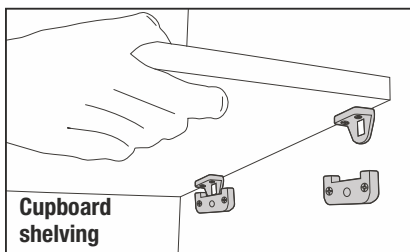
Locking pin being inserted from the back



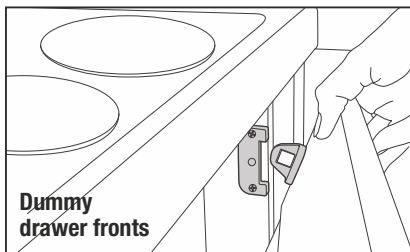
Locking pin inserted



Larger Filler panels



Cupboard shelving



Dummy drawer fronts



Pro-Fit Innovations Ltd. 63 Station Road, Oakworth, West Yorks BD22 0DZ.
Telephone +44 (0)1535 647403 Visit www.pro-fitinnovations.co.uk

PanelLock